

SATURATION DIVING SYSTEM

ASK FOR INFORMATION

com@hydrokarst.fr
+33 (0)4 76 21 34 06





SATURATION DIVING SYSTEM

UTILITY

ULIS (light deep diving unit) is a compact and self-contained system used for deep diving up to **-200 meters depth**.

Commercial divers can stay within the unit up to **31 consecutive days** thanks to living chambers fully equipped, and the decompression only takes part at the end of the works. The ULIS system can be **mobilized by road transportation, shipment or aerial**

SPECIFICATIONS

Main Unit (GC DORIS)

Skid mounted :

- Wet pot Ø 1600 mm – rated : 200 m.s.w.
- Launching / handling hydraulic frame and hydraulic winch.
- Diving closed bell – 2 divers – Ø 1740 mm.
- 2 hydraulic winches, cables and clump weights.
- Umbilical – 250 m long – hydraulic powered sheave.

Living chambers Ø 1800 (COMEX)

Chamber fitted with medical lock, man lock and all equipment for 4 saturated divers with communications, video, sanitary, fire extinguishers and bedding.

HRC living chamber Ø 1800 (COMEX)

HRC : Hyperbaric Rescue Chamber.

Chamber mounted in a frame with buoyancy ballasts, emergency gas banks, gas panels, batteries.

Diving and saturation control room

Diving control room :

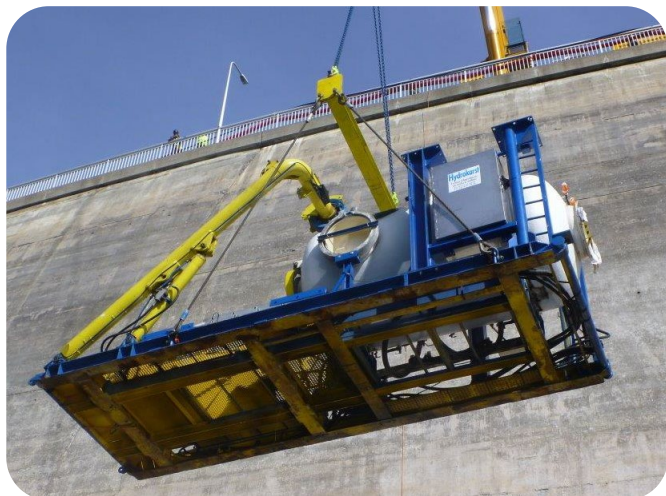
- Complete gas panel (divers, bell), communication.

Saturation control room :

- Gas panels for the living chambers.
- Analysis atmosphere rack
- Video, communication, and recording, rack

Environmental control units (main and back-up)

- Complete set with soda lime canister, Slicagel pot, hot / cold water unit, gas circulator (one spare gas circulator)
- Hot / cold water machine for the chambers





SATURATION DIVING SYSTEM

Hot water system for the bell and divers

- 4 x 25 kW heating system with main booster pump and emergency network.

Workshop / spare parts storage

- Full set of tools.
- Installation of a workshop for tools and spare parts storage.
- Gas booster
- 1 x 30 m³/h air compressor

Open top storage

- 2 hydraulic power packs.
- 250 m twin hydraulic hoses.



Therapeutic unit for emergency

- Recompression chamber Ø 1400 with man lock and medical lock.
- Gas control panel.
- Therapeutic mixed gas cylinders (O₂, 50/50, O₂/He...).

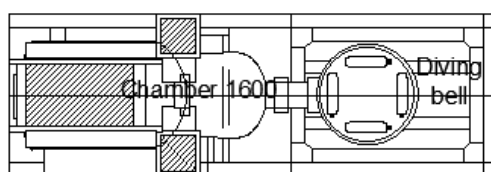




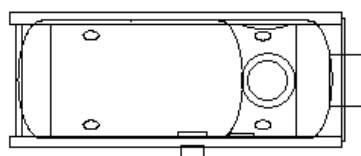
SATURATION DIVING SYSTEM

DRAWINGS

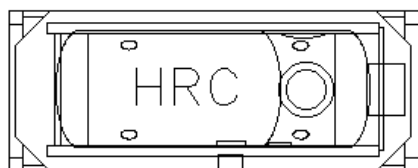
Main unit



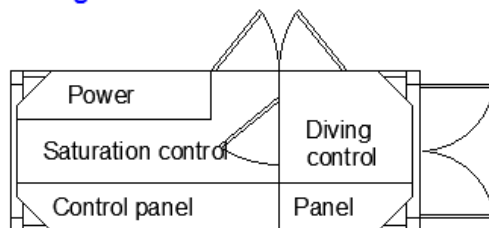
1st living chamber Ø 1800



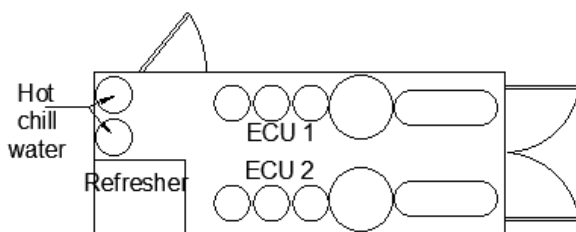
2nd living chamber Ø 1800 (HRC)



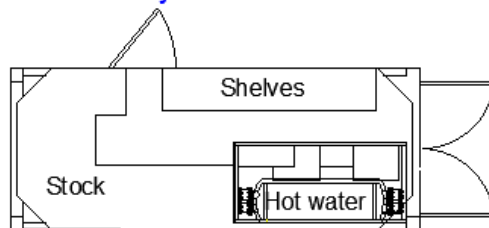
Diving and saturation control room



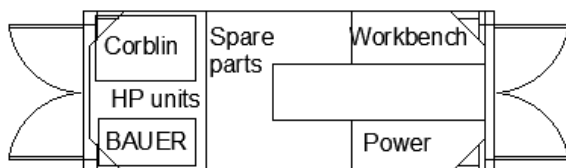
ECU



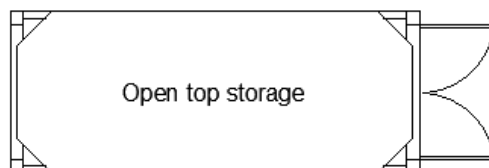
Hot water system



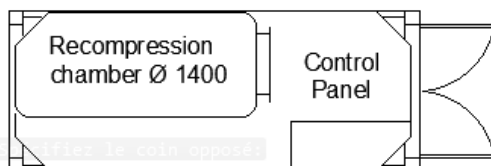
Workshop



Open top storage



Therapeutic unit



Module de base ULIS	24 tons	2,5 x 2,5 x 7,2 m
Caisson vie Ø 1800	11,5 tons	2,5 x 2,5 x 6 m
Caisson vie Ø 1800 - HRC	11,5 tons	2,5 x 2,5 x 6 m
Poste contrôle plongée / saturation	4,5 tons	2,5 x 2,5 x 6 m
Régénération	9,3 tons	2,5 x 2,5 x 6 m
Chaudière	7 tons	2,5 x 2,5 x 6 m
Atelier	5,5 tons	2,5 x 2,5 x 6 m
Open top (vide)	2,5 tons	2,5 x 2,5 x 6 m
Caisson de recompression d'urgence	5 tons	2,5 x 2,5 x 6 m